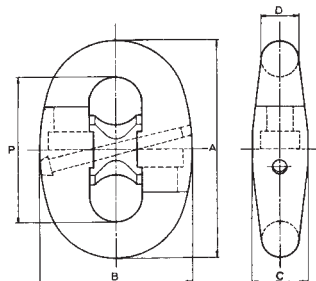


SPOJNI ELEMENTI ZA BRODSKE LANCE

209

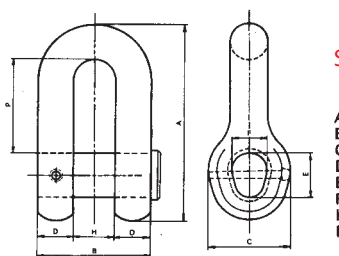
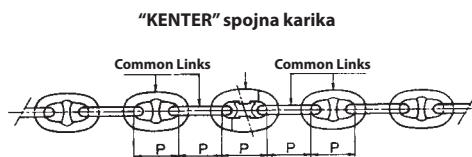
CONNECTING LINKS FOR SHIP CHAIN



SI. 209 a

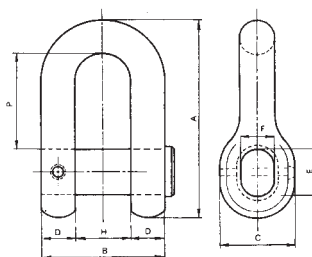
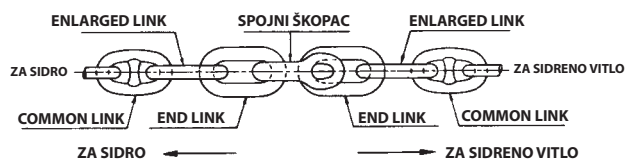
A = 6 d
B ≈ 4,2 d
C ≈ 1,52 d
D = 1 d
P = 4 d

d = promjer lanca
P = korak lanca



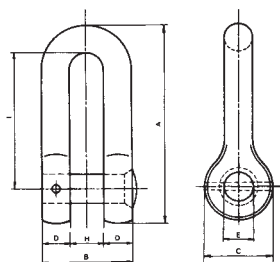
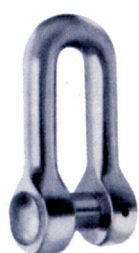
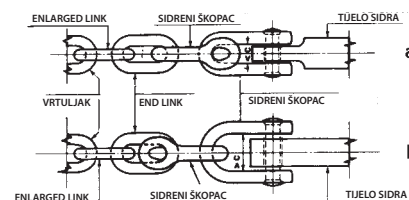
SI. 209 b

A ≈ 7,1 d
B ≈ 4,0 d
C ≈ 2,8 d
D ≈ 1,3 d
E ≈ 1,6 d
F ≈ 1,2 d
H ≈ 1,4 d
P ≈ 3,4 d



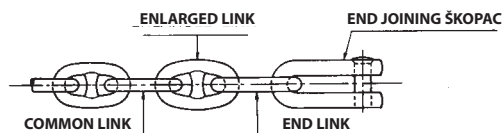
SI. 209 c

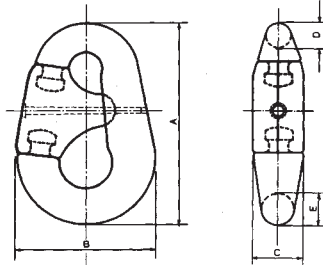
A ≈ 8,7 d
B ≈ 5,2 d
C ≈ 3,1 d
D ≈ 1,4 d
E ≈ 1,8 d
F ≈ 1,4 d
H ≈ 2,4 d
P ≈ 4,6 d



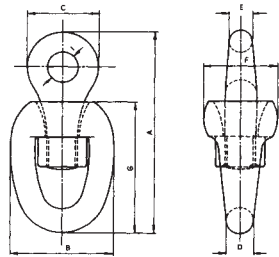
SI. 209 d

A ≈ 8,6 d
B ≈ 3,8 d
C ≈ 3,0 d
D ≈ 1,2 d
E ≈ 1,4 d
F ≈ 1,4 d
H ≈ 5,9 d



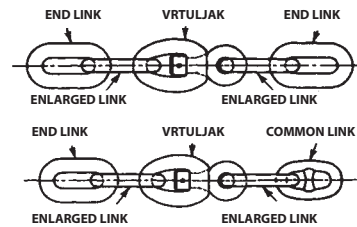


Sl. 209 e



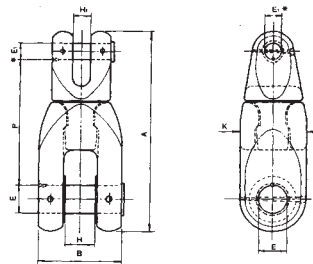
Sl. 209 f

- A ≈ 9,7 d
- B ≈ 4,7 d
- C ≈ 3,8 d
- D ≈ 1,2 d
- E ≈ 1,2 d
- F ≈ 3,8 d
- G ≈ 6,3 d
- I ≈ 1,4 d



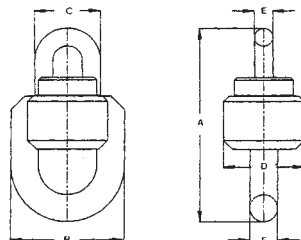
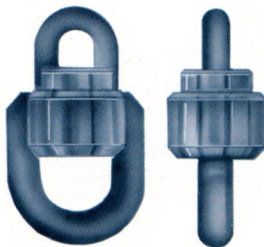
Povezivanje sa joining škopcem "D" tipa

Povezivanje sa "Kenter" škopcem



Sl. 209 g

*OBLONG ON K4



Sl. 209 h

- A ≈ 10,85 d
- B ≈ 6,2 d
- C ≈ 3,6 d
- D ≈ 4,4 d
- E ≈ 1 d
- F ≈ 1,5 d

TABLICA TEŽINA SPOJNIH ELEMENATA ZA BRODSKE LANCE

Promjer D	Common link	Enlarged link	Open end link	Kenter škopac (sl. 208 a)	Joining škopac tip D (sl. 209 b)	Sidreni škopac tip D ISO standard (sl. 209 c)	approx mass 27,5 met	mass 100 met
mm	kg	kg	kg	kg	kg	kg	kg	kg
12,5	0,2	0,27	0,3	0,3	0,5	0,7	110	350
14	0,27	0,38	0,45	0,48	0,8	1,1	130	440
16	0,38	0,49	0,6	0,62	1	1,5	170	575
17,5	0,49	0,62	0,7	0,81	1,3	2	180	685
19	0,62	0,77	0,9	1,1	1,7	2,5	220	810
20,5	0,8	1,1	1,1	1,3	2,0	3	264	975
22	0,9	1,2	1,3	2	3	4	305	1166
24	1,2	1,7	1,8	2	3	5	362	1318
26	1,6	2,2	2,2	3	4	6	425	1539
28	1,9	2,8	2,9	4	5	8	493	1775
30	2,4	3,2	3,3	4	6	9	566	2028
32	2,9	3,9	4	5	7	11	644	2298
34	3,4	4,7	5	6	10	14	727	2584
36	4	5,5	5,9	7	11	16	815	2967
38	4,7	6,1	6,8	8	12	18	909	3292
40	5,5	7,1	8	9	13	20	1007	3634
42	6,4	8,4	9,6	11	17	25	1110	3992
44	7,4	10	11,2	13	19	27	1218	4368
46	8,5	11,5	13	14	21	30	1331	4761
48	9,8	13,1	15	15	23	34	1450	5170
50	11	15	17	18	29	41	1573	5596
52	13	17	20	20	31	45	1701	6040
54	14	19	22	20	34	50	1835	6500
56	16	21	23	24	38	54	1973	6976
58	17	23	25	28	44	65	2117	7596
60	19	25	27	28	48	70	2265	8110
62	21	28	30	33	52	76	2419	8642
64	23	31	34	38	57	82	2577	9191
66	25	34	38	38	66	94	2741	9757
68	27	37	42	44	70	101	2909	10339
70	30	40	45	44	75	108	3083	10938
73	34	45	52	51	87	124	3353	11869
76	40	50	59	58	99	141	3634	12837
78	42	55	63	65	106	150	3828	13504
81	46	61	70	74	119	171	4128	14536
84	52	68	78	84	134	193	4440	15605
87	58	75	86	94	150	218	4762	17090
90	64	82	95	105	167	243	5097	18250
92	69	88	100	105	175	256	5326	19040
95	75	98	112	115	200	290	5679	20260
97	80	102	120	135	210	305	5920	21100
98								
100	88	112	130	150	230	335	6292	23380
102	93	120	138	150	243	350	6546	23260
105								
107	109	140	158	175	285	410	7204	25539
108								
111	120	160	175	200	305	445	7752	27420
114	130	173	193	225	325	475	8177	28880
117	142	185	210	225	345	505	8613	30380
120								